

Meridian Research LLC



Project 135558
Lab # 131054
Date Rec'd 12/9/2025
Report Issued 12/23/2025

Project**Sample** GHK-Cu 100 mg

Certificate of Analysis

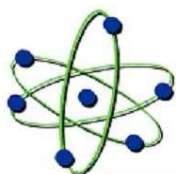


<u>Analyte</u>	<u>Result</u>	<u>LOQ</u>	<u>Units</u>	<u>% of Label</u>	<u>Method</u>	<u>Date</u>	<u>CAS</u>
Peptide Analysis							
Chromatographic purity	>99.95	0.5	%		HPLC-UV/MS	12/15/2025	
GHK-Cu	107	0.5	mg	106.5	HPLC-UV-MS	12/15/2025	49557-75-7
GHK-Cu	ID Confirmed				HPLC-UV-MS	12/15/2025	

The data presented are from the analysis of the sample shown and meet Krause Analytical internal quality assurance criteria unless otherwise flagged.
 Methods shown reference current Krause Analytical SOPs
 ND - Not detected LOQ - limit of quantification
 Copyright © 2025 Krause Analytical LLC. All rights reserved.

Respectfully submitted,

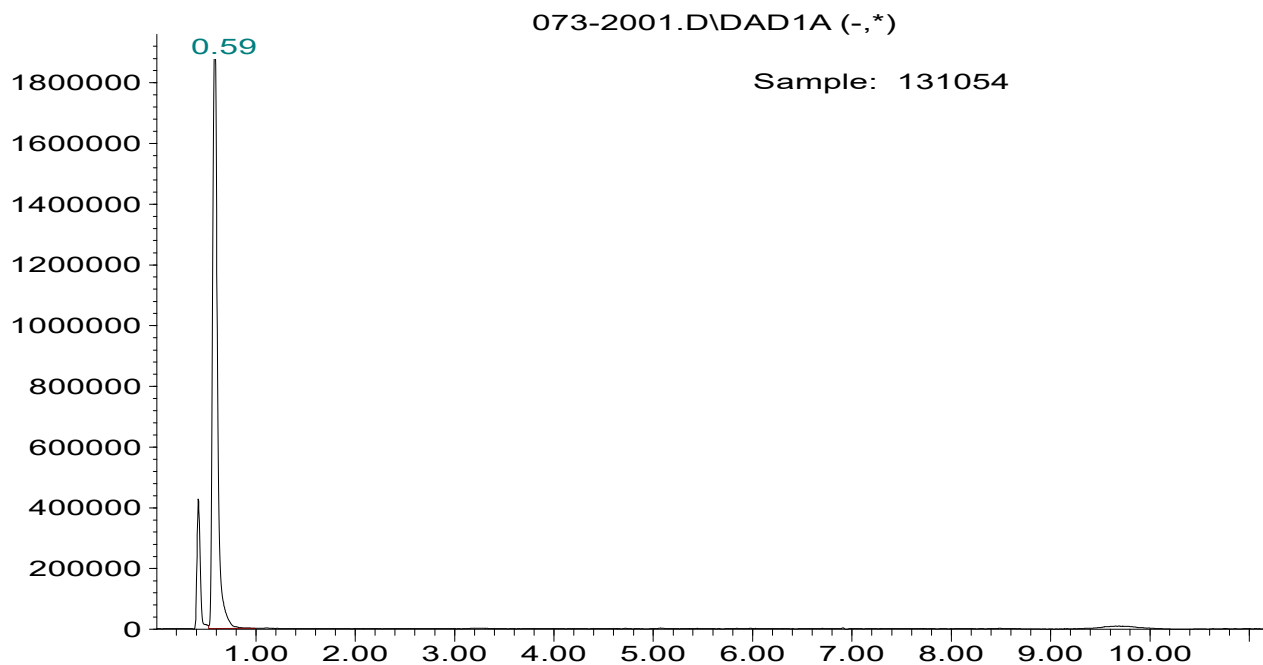
Mark C. Krause
 Laboratory Director



krause analytical

Chromatogram

Response_



Time

Mass spectrum/Reference Spectrum

