

Meridian Research LLC



**Project** 135558  
**Lab #** 131061  
**Date Rec'd** 12/9/2025  
**Report Issued** 12/23/2025

**Project****Sample** Retatrutide 30 mg

## Certificate of Analysis

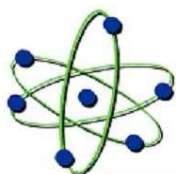


<u>Analyte</u>	<u>Result</u>	<u>LOQ</u>	<u>Units</u>	<u>% of Label</u>	<u>Method</u>	<u>Date</u>	<u>CAS</u>
<b>Peptide Analysis</b>							
Chromatographic purity	99.87	0.5	%		HPLC-UV/MS	12/14/2025	
Retatrutide	32.3	0.5	mg	107.7	HPLC-UV-MS	12/14/2025	2381089-83-2
Retatrutide	ID Confirmed				HPLC-UV-MS	12/14/2025	

The data presented are from the analysis of the sample shown and meet Krause Analytical internal quality assurance criteria unless otherwise flagged.  
 Methods shown reference current Krause Analytical SOPs  
 ND - Not detected LOQ - limit of quantification  
 Copyright © 2025 Krause Analytical LLC. All rights reserved.

Respectfully submitted,

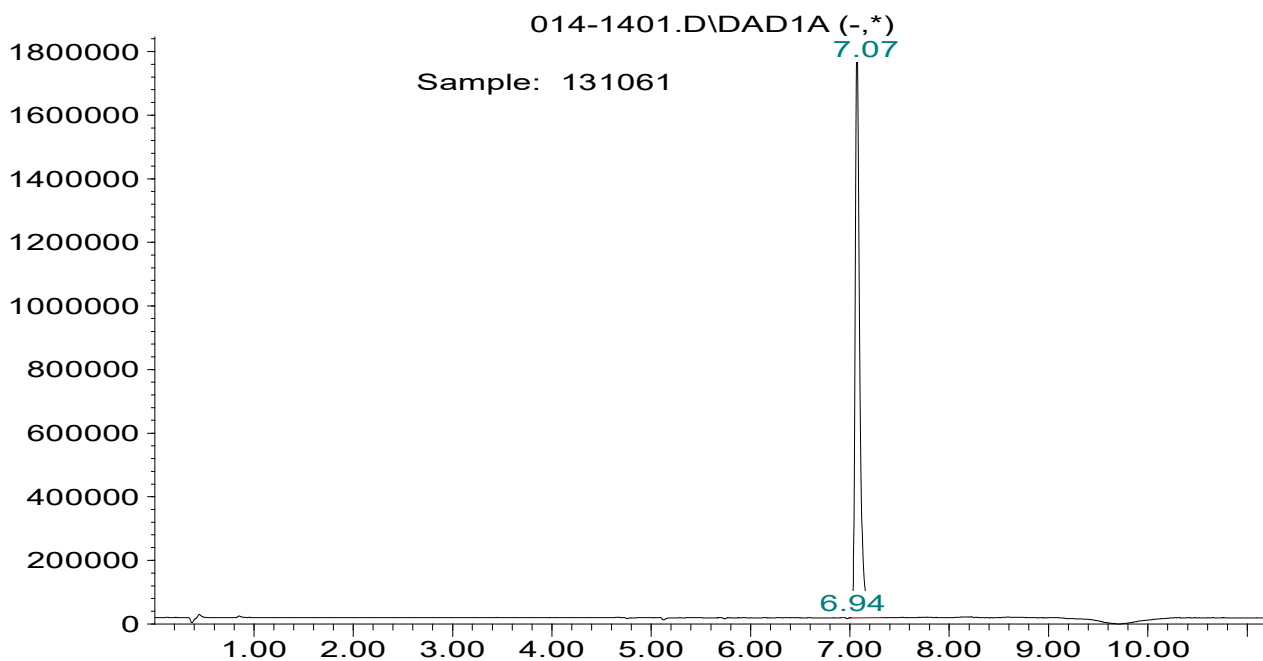
Mark C. Krause  
 Laboratory Director



**krause analytical**

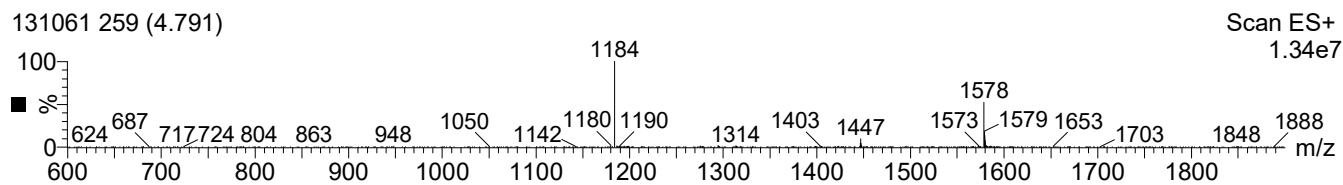
### Chromatogram

Response\_



Time

### Mass spectrum/Reference Spectrum



Retatrutide 174 (3.219)

Scan ES+ 1.17e7

