

Meridian Research LLC



Project 135558
Lab # 131068
Date Rec'd 12/9/2025
Report Issued 12/23/2025

Project**Sample** Glutathione 1500 mg

Certificate of Analysis

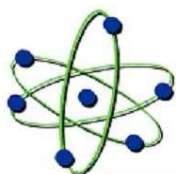


<u>Analyte</u>	<u>Result</u>	<u>LOQ</u>	<u>Units</u>	<u>% of Label</u>	<u>Method</u>	<u>Date</u>	<u>CAS</u>
Peptide Analysis							
Chromatographic purity	99.95	0.5	%		HPLC-UV/MS	12/15/2025	
Glutathione	1,360	0.5	mg	90.8	HPLC-UV-MS	12/15/2025	70-18-8
Glutathione	ID Confirmed				HPLC-UV-MS	12/15/2025	

The data presented are from the analysis of the sample shown and meet Krause Analytical internal quality assurance criteria unless otherwise flagged.
 Methods shown reference current Krause Analytical SOPs
 ND - Not detected LOQ - limit of quantification
 Copyright © 2025 Krause Analytical LLC. All rights reserved.

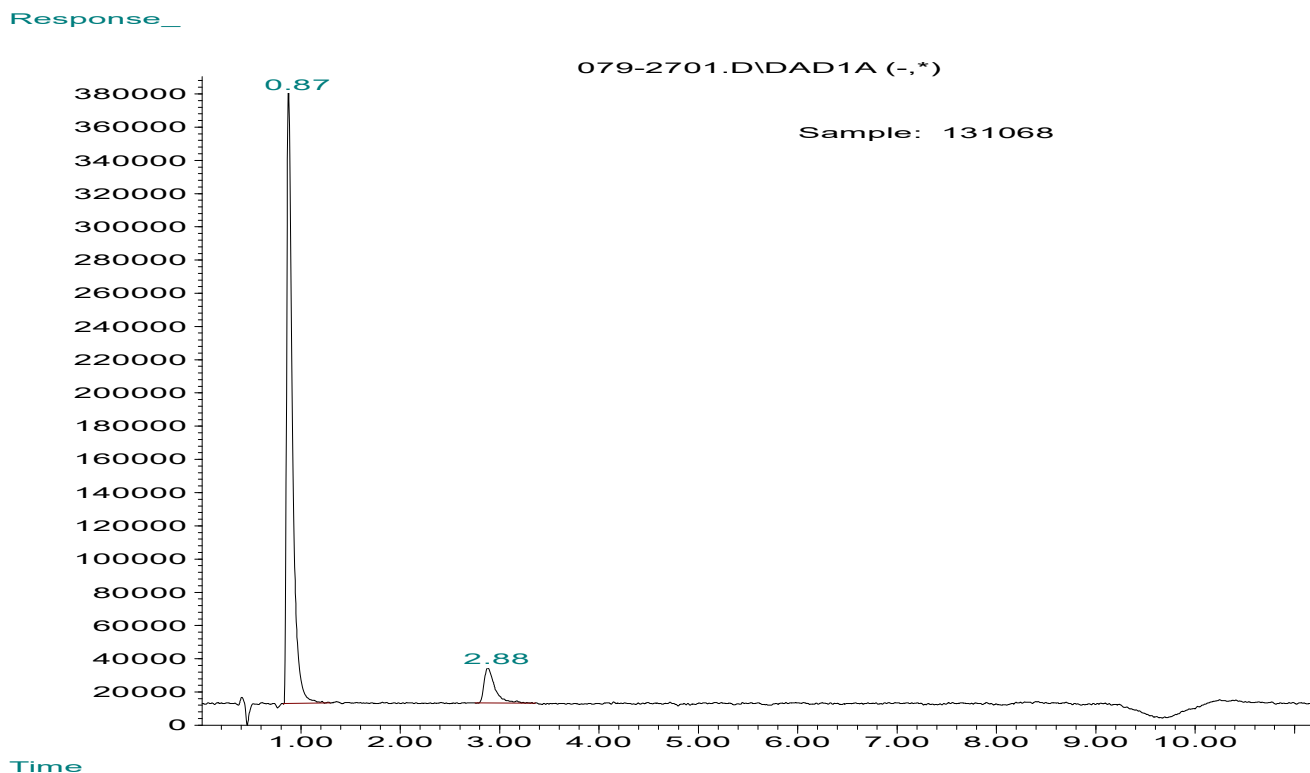
Respectfully submitted,

Mark C. Krause
 Laboratory Director



krause analytical

Chromatogram



Mass spectrum/Reference Spectrum

